



AVAILABLE SPACE HIGHLIGHTS

19,737 SF – 3rd Floor

Single tenant floor that includes spectacular scenic view of the two onsite lakes that total 20 acres in size.

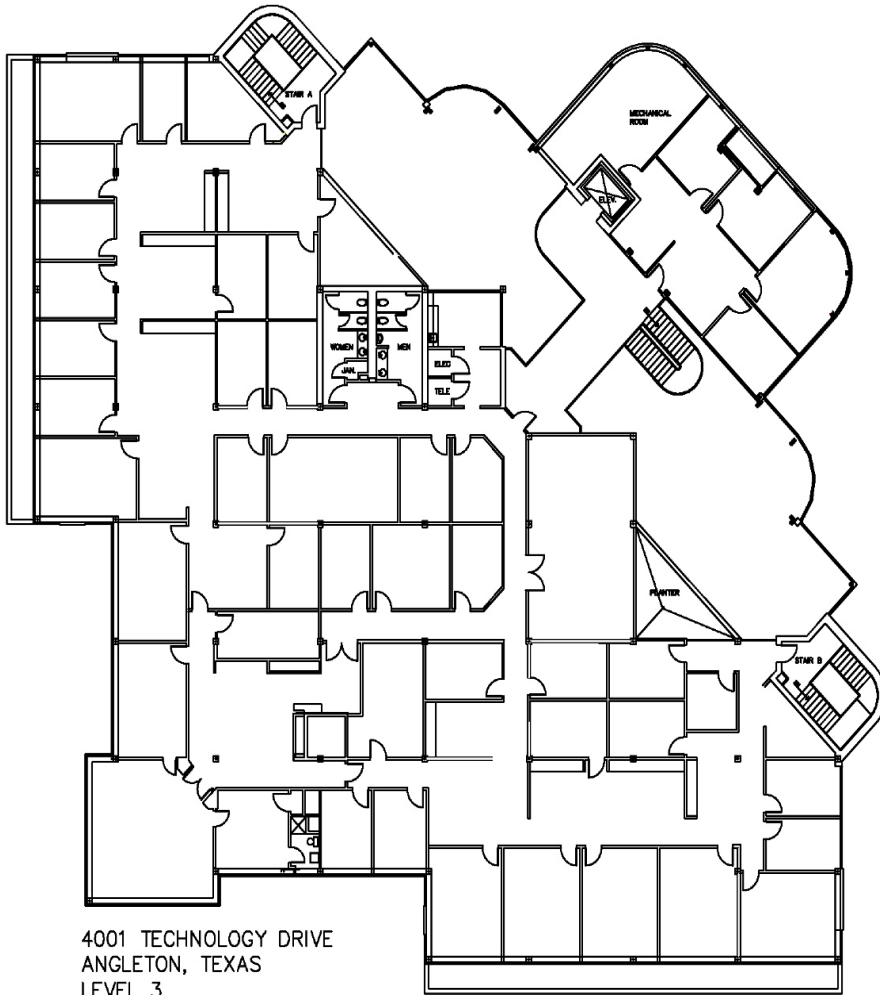


4001 TECHNOLOGY DRIVE

BUILDING FEATURES

- 3-Story, Class 'A' Office Building
 - Originally constructed as the executive offices for an international company.
- Built in 1984 / Modernized in 2012-2013
- 58,720 Total SF
- Dedicated Parking Lots





4001 TECHNOLOGY DRIVE
ANGLETON, TEXAS
LEVEL 3



4001 TECHNOLOGY DRIVE -- ANGLETON, TX

7

7

5

1

5