



AVAILABLE SPACE HIGHLIGHTS

22,866 SF

Freestanding, 100% climate-controlled bio-medical building, which includes operating & recovery rooms, stainless steel indoor dog kennels (100 small and 40 large), dog runs, offices, and associated improvements.

4023 TECHNOLOGY DRIVE

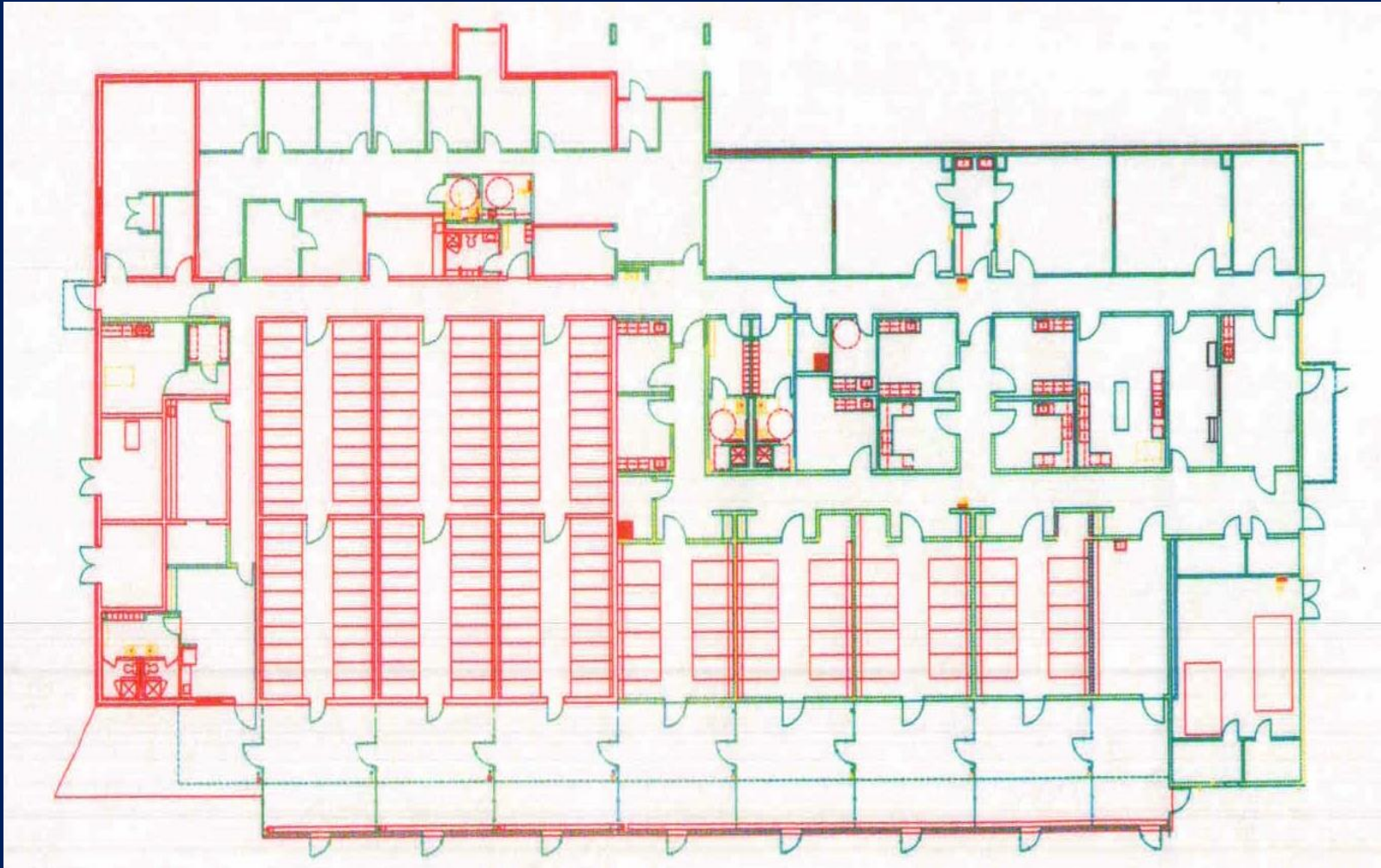
BUILDING FEATURES

- 1-Story, Bio-Medical Facility
- Built in 1991
- 22,866 Total SF
- Building offers secured/gated access



Central Brazoria County

Business Park | Angleton, Texas



4023 TECHNOLOGY DRIVE -- ANGLETON, TX

7

7

5

1

5